



Electrolux

JHT-GET Low-Profile Tee Connection Kit

Installation Instructions

Description

The JHT-GET is design to be use with Jiahong (HTR) parallel heating cables.
The JHT-GET is installed on pipe under insulation and/or cladding.
The JHT-GET is a (RATED NEMA TYPE 4X)

Tools & Material Needed

- Wire cutter
- Nose pliers
- Nose pliers
- Tie Wrap
- Glass Cloth Tape
- JSR03

Approvals



Class I, Div. 2, Groups A, B, C, D^[2]
Class II, Div. 2, Groups E, F, G^[2]
Class III^[2]



Kit includes

Item	Qty	Description
A	1	Main box
B	3	Pressure Seal End
C	3	(colour) Grommets
D	2	Gaskets for Main Box
E	2	Cover for Main Box
F	1	Label



⚠ WARNING:

This component is an electrical device which must be installed correctly to ensure proper operation and to prevent shock or fire. Read these important warnings and carefully follow all of the installation instructions.

- To minimize the danger of fire from sustained electrical arcing if the heating cable is damaged or improperly installed, and to comply with the requirements, certifications, and National Electrical Codes, ground-fault equipment protection must be used. Arcing may not be stopped by conventional circuit breakers

- Bus wires will short if they contact each other. Keep bus wires separated.
- Use only fire-resistant insulation materials, such as fiberglass wrap or flame-retardant foam.
- Leave these instructions with the user for future use.

1

- Identify heating cable type.
- Select correct grommet from table below.

Heating Cable	Type	Grommet
HTR	-CR or -CT	RED

* Order separately

⚠ WARNING: Use of the wrong grommet can result in leaks, cracked components, shock or dielectric failure, and will invalidate approvals and certifications



Structure of Model HTR-CR

2

- Leave extra wire for connections and mishaps
Middle of connection box (JHT-GET)



3

- insert first the (Pressure Seal End)
then the (Grommet) for each cable.



4



- Do not cut the braiding
- Denude outer jacket
- Slightly bend the cable where you made the cut to denude it.



5

- Push the braiding to create a bump
- At the bump, use a screwdriver to make a little hole in the braiding
- Bend the cable and make go through the braiding



6



- Do not cut the bus wire
- Denude inner jacket
- Take the denude wire out



7

- Make a pony tail with the braiding at the center of the cable



8

- Nick the denuded area



- Pull back bus with then, denude a section



9

- Cut the center area (core) between the two bus wires



- Bend a take the core out



- Take the core out of the bus wires



- Clean the two bus wires

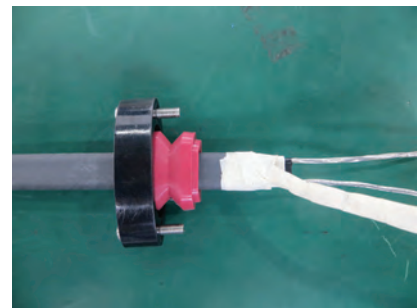
10 For CSA Class 1; Division 2 application only



- Using the (XXX or XXX) glass cloth tape, put the ponytail braid against the inner jacket and do a minimum of 3 loops around the inner jacket.



- Separate from the cable and loop a minimum of two times around the braid.



- Install the grommet to the edge of the loop tape. Do not install grommet over the tape.

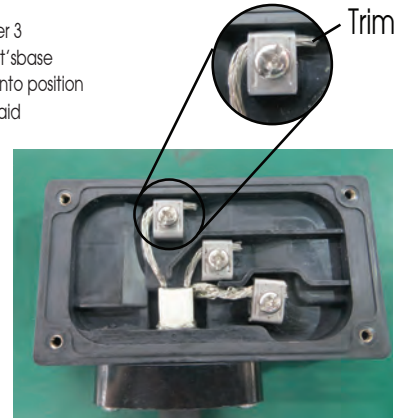
11

- Install wire number 3 in the main box
- Install the grommet into the hole of the main box
- Push pressure seal end and then tight crews back into the main box



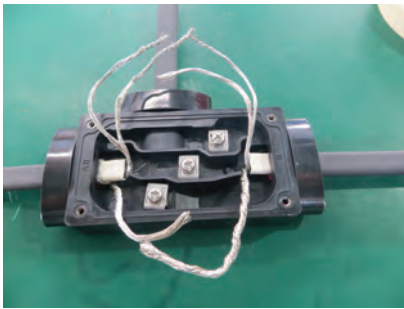
12

- Loosen the screw number 3
- Install wire number 3 on it's base
- Tighten the screw back into position
- Cut all extra wire and braid



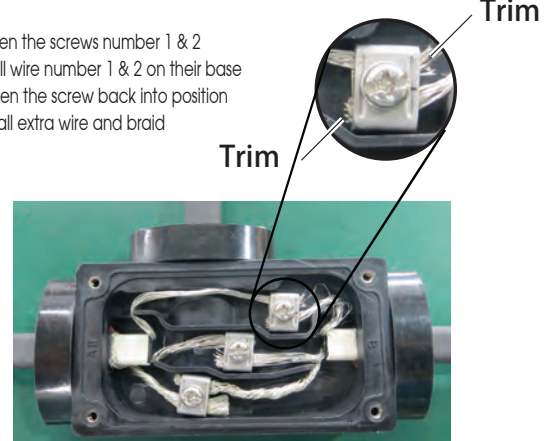
13

- Install the wires number 1 & 2 in the main box
- Install the grommet into the hole of the main box
- Push pressure seal end and then tight crews back into the main box



14

- Loosen the screws number 1 & 2
- Install wire number 1 & 2 on their base
- Tighten the screw back into position
- Cut all extra wire and braid



15

- Install the 2 gaskets and the 2 covers onto the main box.
- Tighten the screw back into position



16

- Fix the Low Profile Tee Connection and side wires to the pipe using tape
- Fix insulation
 - Install label on the of the insulation protector
- Give instruction to the owner/user.

